

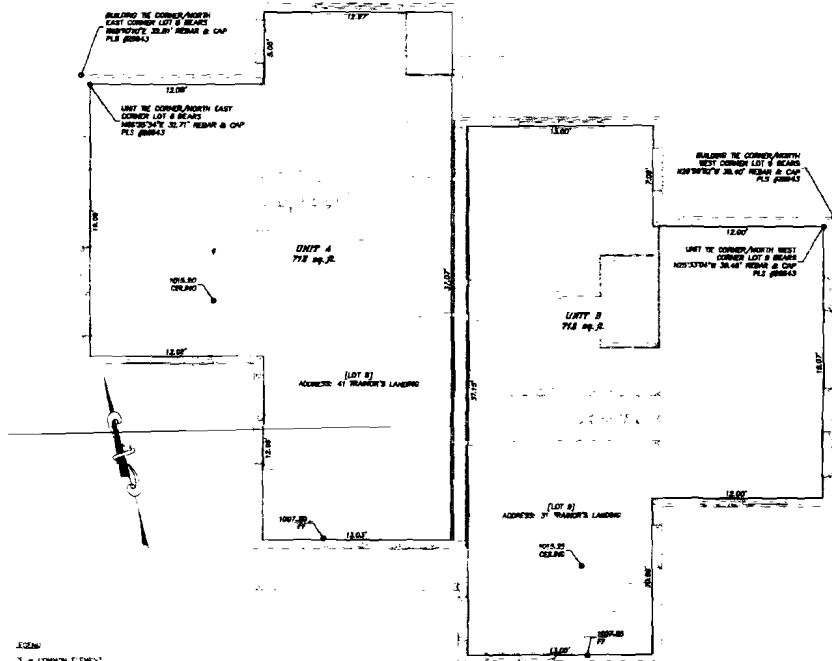
CONDOMINIUM MAP OF

TRAINOR'S LANDING CONDOMINIUMS

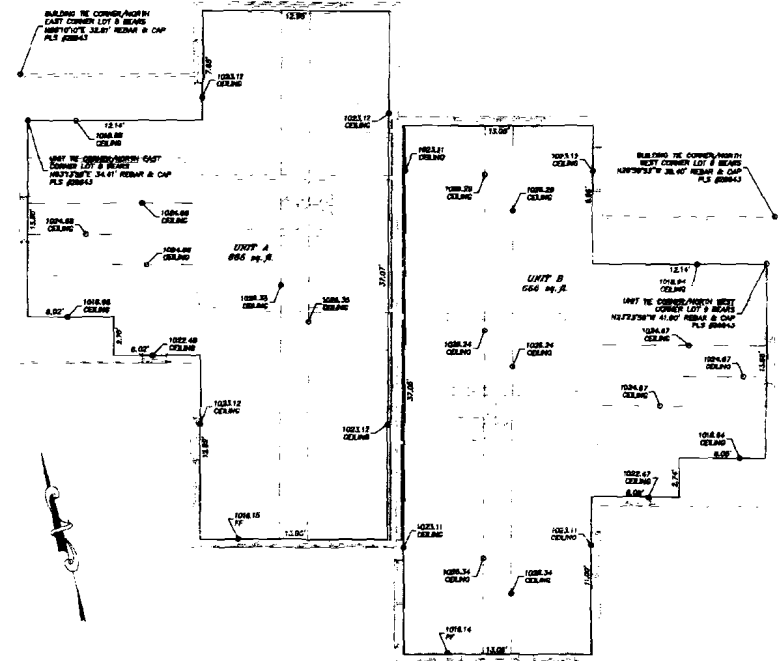
B.62 P.76

LOTS 8, 9, 10, 11 AND 12, BARBER FAMILY SUBDIVISION/PUD, ACCORDING TO THE FIRST AMENDED FINAL PLAT OF LOTS 3 THROUGH 12 BARBER FAMILY SUBDIVISION/PUD LOCATED IN A PORTION OF LOT 1 OF THE NE1/4NE1/4 OF SECTION 13, TOWNSHIP 10 SOUTH, RANGE 85 WEST OF THE 6th P.M. COUNTY OF PITKIN, STATE OF COLORADO

SHEET 2 OF 6



PLAN VIEW OF BUILDING ON LOTS 8 & 9, 1ST FLOOR
SCALE: 1" = 8'



PLAN VIEW OF BUILDING ON LOTS 8 & 9, 2ND FLOOR
SCALE: 1" = 8'

- LEGEND:
- CL - COMMON ELEMENT
 - CE - UNIT COMMON ELEMENT
 - N 15° 30' 00" E NORTH-SOUTH
EXTERIOR WALL BEARING UNITS A & B
 - S 75° 25' 54" E EAST-WEST
EXTERIOR WALL BEARING UNITS A & B
 - N 15° 30' 00" E NORTH-SOUTH
EXTERIOR WALL BEARING UNITS A & B
 - S 75° 25' 54" E EAST-WEST
EXTERIOR WALL BEARING UNITS A & B

PLAN & ELEVATION VIEWS ARE FROM ARCHITECTURAL DRAWINGS SUPPLIED WITH AS-BUILT DIMENSIONS AND ELEVATION INFORMATION.

ALL PARTS OF THE PROPERTY, INCLUDING IMPROVEMENTS, INSTALLATIONS AND FACILITIES WHICH ARE NOT INCLUDED HEREIN ARE UNIT AS THE UNITS ARE DEFINED BY THE DECLARATION AND THIS MAP. LOCATIONS OF OTHER COMMON ELEMENTS OR UNIT COMMON ELEMENTS AS SHOWN THEREIN ARE DEFINED IN THE DECLARATION.

SOPRIS ENGINEERING - LLC
CIVIL CONSULTANTS
502 MAIN STREET, SUITE A3
CARBONDALE, COLORADO 81623
(970) 704-0311

472952
Page 2 of 6
11-Feb-2022 10:48 AM

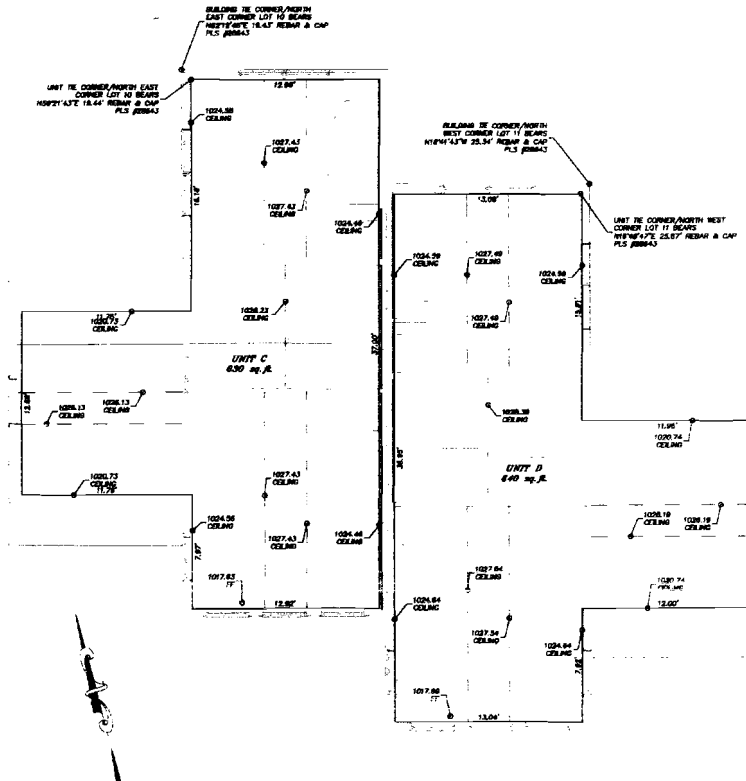
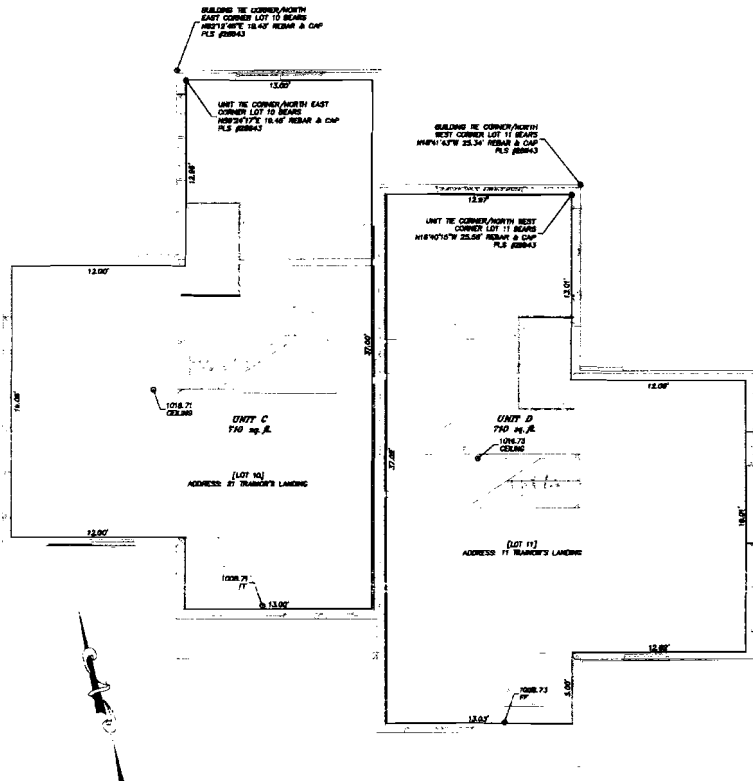
CONDOMINIUM MAP OF

TRAINOR'S LANDING CONDOMINIUMS

B62 P.77

LOTS 8, 9, 10, 11 AND 12, BARBEE FAMILY SUBDIVISION/PUD, ACCORDING TO THE FIRST AMENDED FINAL PLAT OF LOTS 3 THROUGH 12 BARBEE FAMILY SUBDIVISION/PUD LOCATED IN A PORTION OF LOT 1 OF THE NE1/4NE1/4 OF SECTION 13, TOWNSHIP 10 SOUTH, RANGE 85 WEST OF THE 6th P.M. COUNTY OF PITKIN, STATE OF COLORADO

SHEET 3 OF 8



- LEGEND
- CE = COMMON ELEMENT
- CE-L = LIMITED COMMON ELEMENT
- N = 144°32'0" C NORTH-SOUTH INTERIOR WALL BEARING UNITS C & D
- S = 354°28'0" E EAST-WEST INTERIOR WALL BEARING UNITS C & D
- N = 144°32'0" L NORTH-SOUTH EXTERIOR WALL BEARING UNITS C & D
- S = 354°28'0" E EAST-WEST EXTERIOR WALL BEARING UNITS C & D
- PATRIOS = BALU BEARING UNITS 1 & 2

PLAN & ELEVATION NOTES ARE FROM ARCHITECTURAL DRAWINGS UPDATED WITH AS-BUILT DIMENSIONS AND ELEVATION INFORMATION

ALL PARTS OF THE PROPERTY, UNLESS OTHERWISE SPECIFIED, ARE SHOWN AS EXISTING AND NOT TO BE CONSIDERED AS PART OF THE PROJECT. THE INFORMATION AND THIS MAP CONSTITUTE THE ENTIRE CONTRACT. THE CONTRACTOR SHALL BE RESPONSIBLE FOR VERIFYING ALL DIMENSIONS AND CONDITIONS SHOWN ON THESE PLANS AND NOTED IN THE DECLARATION.

SOPRIS ENGINEERING - LLC

CIVIL CONSULTANTS
502 MAIN STREET, SUITE A3
CARBONDALE, COLORADO 81623
(970) 704-0311

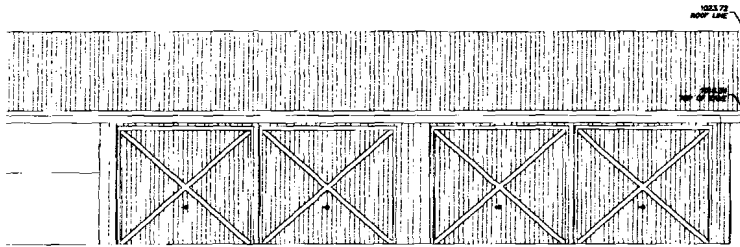


CONDOMINIUM MAP OF
LOT 12, BARBEE FAMILY SUBDIVISION/PLANNED UNIT DEVELOPMENT

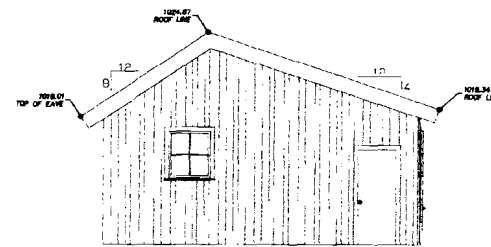
B.62 P.78

LOTS 8, 9, 10, 11 AND 12, BARBEE FAMILY SUBDIVISION/PUD, ACCORDING TO THE FIRST AMENDED FINAL PLAT OF LOTS 3 THROUGH 12 BARBEE FAMILY SUBDIVISION/PUD
 LOCATED IN A PORTION OF LOT 1 OF THE NE1/4NE1/4 OF SECTION 13, TOWNSHIP 10 SOUTH, RANGE 85 WEST OF THE 6th P.M.
 COUNTY OF PITKIN, STATE OF COLORADO

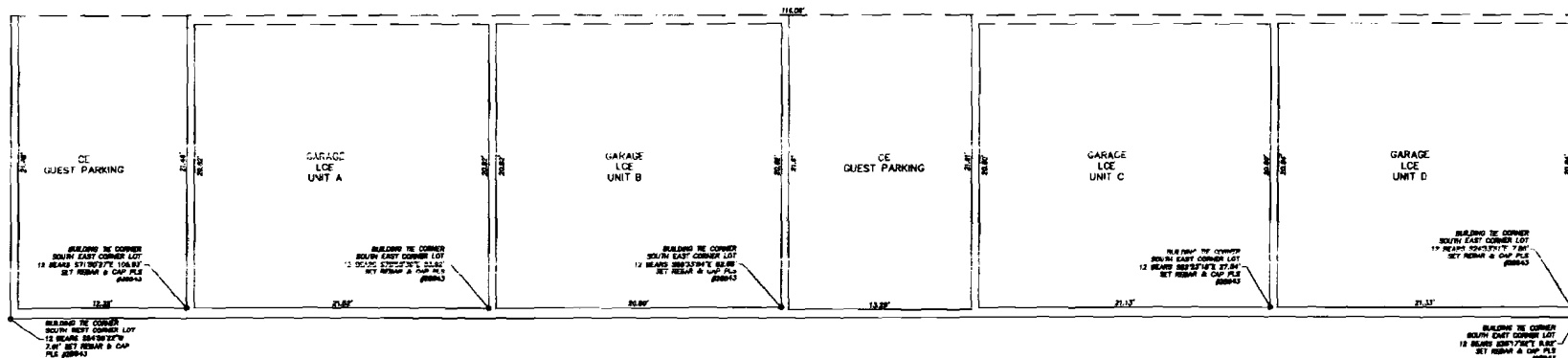
SHEET 4 OF 6



NORTH ELEVATION OF BUILDING LOT 12
 SCALE: 1" = 4'



EAST ELEVATION OF BUILDING LOT 12
 SCALE: 1" = 4'



PLAN VIEW OF BUILDING ON LOT 12
 SCALE: 1" = 4'

- LEGEND
- CE - COMMON ELEMENT
 - LCE - LIMITED COMMON ELEMENT
 - H 14'00" N. NORTH-SOUTH
 EXTERIOR WALL BEARING UNITS C & D
 - S 7'00" W. E. EAST-WEST
 EXTERIOR WALL BEARING UNITS C & D
 - H 14'00" E. NORTH-SOUTH
 EXTERIOR WALL BEARING UNITS C & D
 - E 7'00" W. E. EAST-WEST
 EXTERIOR WALL BEARING UNITS C & D

PLAN & ELEVATION WERE MADE FROM ARCHITECTURAL DRAWINGS SUPPLIED WITH 10-2002 RENOVATION AND ELEVATION INFORMATION.
 ALL PARTS OF THE PROPERTY, INCLUDING MECHANICAL INSTALLATIONS AND FACILITIES WHICH ARE NOT INCLUDED WITHIN A UNIT, AS THE TERM UNIT IS DEFINED BY THE DECLARATION AND THIS MAP, INCLUDING OTHER COMMON ELEMENTS OR LIMITED COMMON ELEMENTS AS SHOWN THEREIN ARE SHOWN IN THE DECLARATION.

SCPNIS ENGINEERING - LLC

CIVIL CONSULTANTS
 502 MAIN STREET, SUITE A3
 CARBONDALE, COLORADO 81623
 (970) 704-0311



472562
 Page 4 of 6
 12/23/2003 10:07 AM

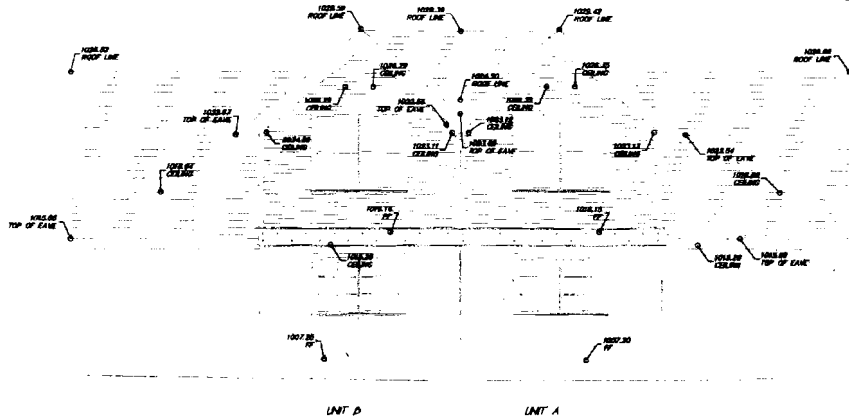
CONDOMINIUM MAP OF:

TRAINOR'S LANDING CONDOMINIUMS

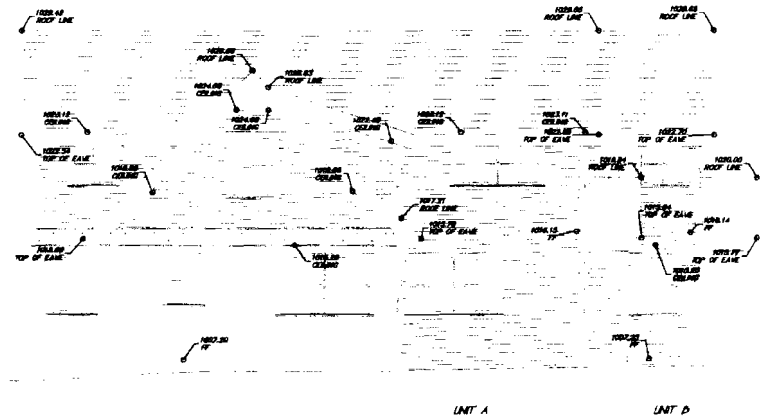
B.62 P.79

LOTS 8, 9, 10, 11 AND 12, BARBEE FAMILY SUBDIVISION/PUD, ACCORDING TO THE FIRST AMENDED FINAL PLAT OF LOTS 3 THROUGH 12 BARBEE FAMILY SUBDIVISION/PUD
LOCATED IN A PORTION OF LOT 1 OF THE NE1/4NE1/4 OF SECTION 13, TOWNSHIP 10 SOUTH, RANGE 85 WEST OF THE 6th P.M.
COUNTY OF PITKIN, STATE OF COLORADO

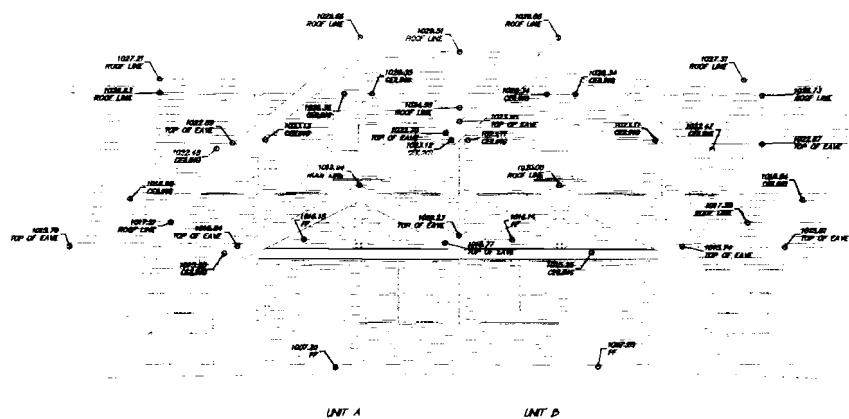
SHEET 5 OF 6



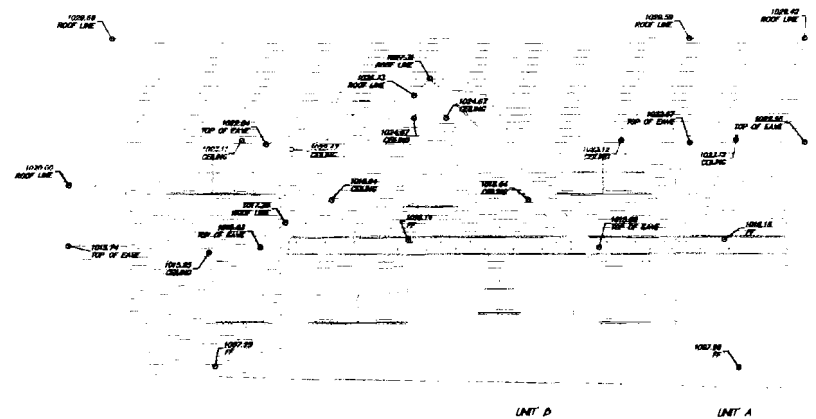
NORTH ELEVATION OF BUILDING ON LOTS 8 & 9
SCALE: 1" = 4'



WEST ELEVATION OF BUILDING ON LOTS 11 & 12
SCALE: 1" = 4'



SOUTH ELEVATION OF BUILDING ON LOTS 10 & 11
SCALE: 1" = 4'



EAST ELEVATION OF BUILDING ON LOTS 8 & 9
SCALE: 1" = 4'

SOPRIS ENGINEERING LLC

CIVIL CONSULTANTS
502 MAIN STREET, SUITE A3
CARBONDALE, COLORADO 81623
(970) 704-0311

472962
Page 8 of 8
ATTACHED 14 11/11/11

