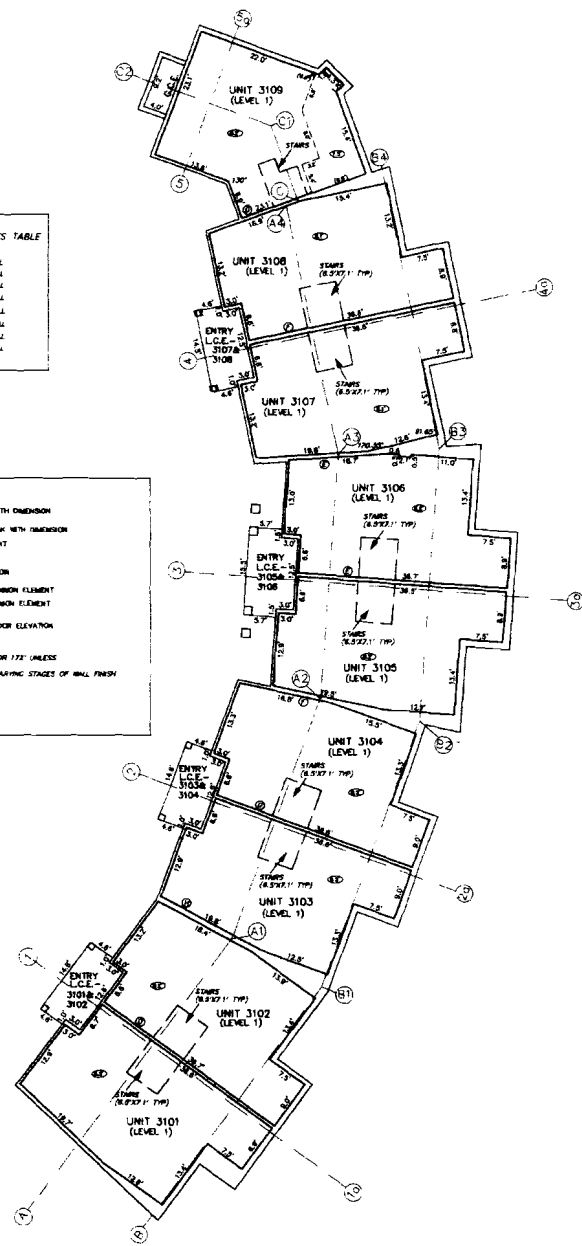






B79 P.29

CONDOMINIUM MAP  
**WILLE RESIDENCES**  
 LOT 3, ASPEN HIGHLANDS VILLAGE P.U.D., BLOCK D  
 SECTION 14, TOWNSHIP 10 SOUTH RANGE 85 WEST OF THE SIXTH PRINCIPAL MERIDIAN  
 PITKIN COUNTY, COLORADO



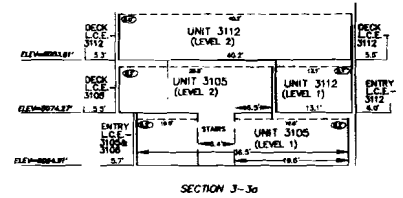
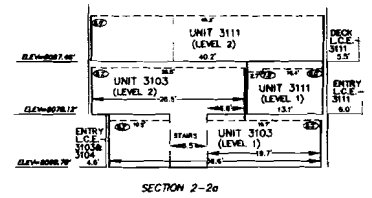
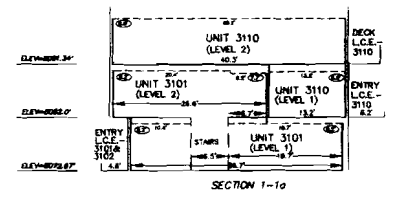
WALL THICKNESS TABLE

(A)	0.5" WALL
(B)	0.5" WALL
(C)	0.5" WALL
(D)	0.5" WALL
(E)	0.5" WALL
(F)	0.5" WALL
(G)	0.5" WALL
(H)	0.5" WALL
(I)	0.5" WALL
(J)	0.5" WALL
(K)	0.5" WALL
(L)	0.5" WALL
(M)	0.5" WALL
(N)	0.5" WALL
(O)	0.5" WALL
(P)	0.5" WALL
(Q)	0.5" WALL
(R)	0.5" WALL
(S)	0.5" WALL

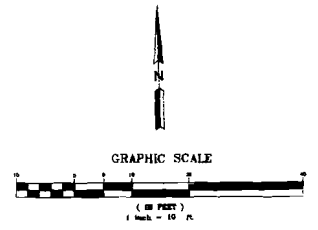
**LEGEND**

- UNIT WALL WITH DIMENSION
- CEILING BREAK WITH DIMENSION
- CEILING HEIGHT
- UNIT STAIRS
- CROSS SECTION
- G.C.E. GENERAL COMMON ELEMENT
- L.C.E. LIMITED COMMON ELEMENT
- ELEVATION: FINISHED FLOOR ELEVATION

**NOTES:**  
 1. WALL ANGLES ARE 90°, 180° OR 270° UNLESS OTHERWISE INDICATED.  
 2. UNITS HERE MEASURED IN FINISHED STAGES OF WALL FINISH.



461679  
 Page: 3 of 6  
 12/11/2013 03:00 PM



LEVEL 1 AND SECTIONS  
 1-1A, 2-2A, & 3-3A



**ALPINE AET**  
 ENGINEERING INC.  
 470 525-3117 • FAX 525-3160

SHEET  
 3 OF 6

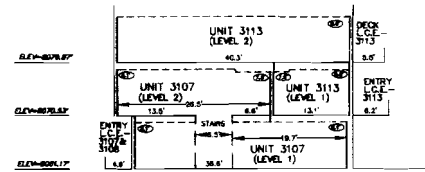
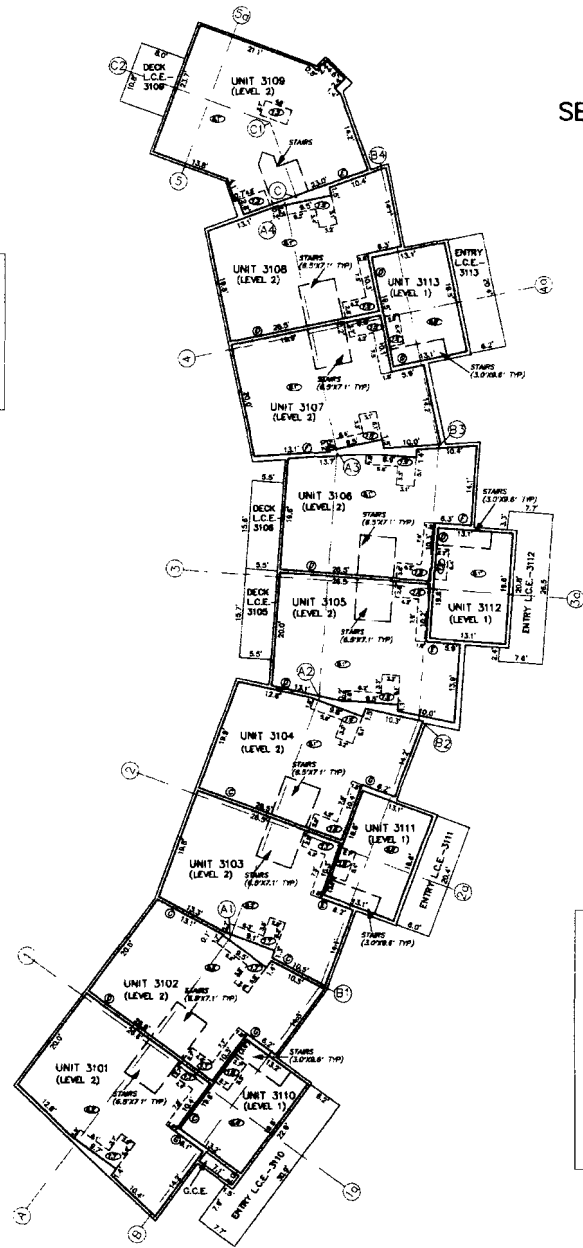
JOB# 3025.3

B.29 P.30

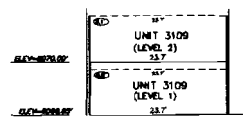
CONDOMINIUM MAP  
**WILLE RESIDENCES**  
 LOT 3, ASPEN HIGHLANDS VILLAGE P.U.D., BLOCK D  
 SECTION 14, TOWNSHIP 10 SOUTH RANGE 85 WEST OF THE SIXTH PRINCIPAL MERIDIAN  
 PITKIN COUNTY, COLORADO

WALL THICKNESS TABLE

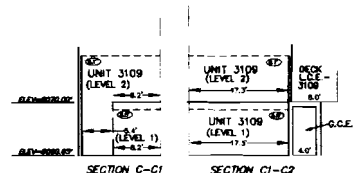
①	0.5" WALL
②	0.6" WALL
③	0.8" WALL
④	0.8" WALL
⑤	0.8" WALL
⑥	0.8" WALL
⑦	0.8" WALL
⑧	1.0" WALL



SECTION 4-4a



SECTION 5-5a



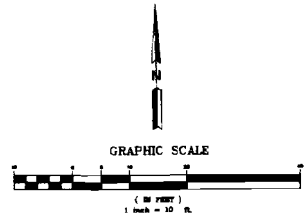
SECTION C-1

SECTION C-1-C2

LEGEND

— 0.5" —	0.5" WALL WITH DIMENSION
— 0.6" —	0.6" WALL WITH DIMENSION
— 0.8" —	0.8" WALL WITH DIMENSION
— 1.0" —	1.0" WALL WITH DIMENSION
— 0.5' —	CEILING HEIGHT WITH DIMENSION
— 0.6' —	CEILING HEIGHT WITH DIMENSION
— 0.8' —	CEILING HEIGHT WITH DIMENSION
— 1.0' —	CEILING HEIGHT WITH DIMENSION
— STAIRS —	UNIT STAIRS
— CROSS SECTION —	CROSS SECTION
— G.C.E. —	GENERAL COMMON ELEMENT
— L.C.E. —	LIMITED COMMON ELEMENT
— ELEVATION —	FINISHED FLOOR ELEVATION

NOTES:  
 1. WALL ANGLES ARE 90, 180 OR 172 UNLESS OTHERWISE INDICATED.  
 2. UNITS WERE MEASURED BY TAPPING STAGES OF WALL FINISH.



LEVEL 2 AND SECTIONS  
 4-4A, 5-5A AND C-1-C2



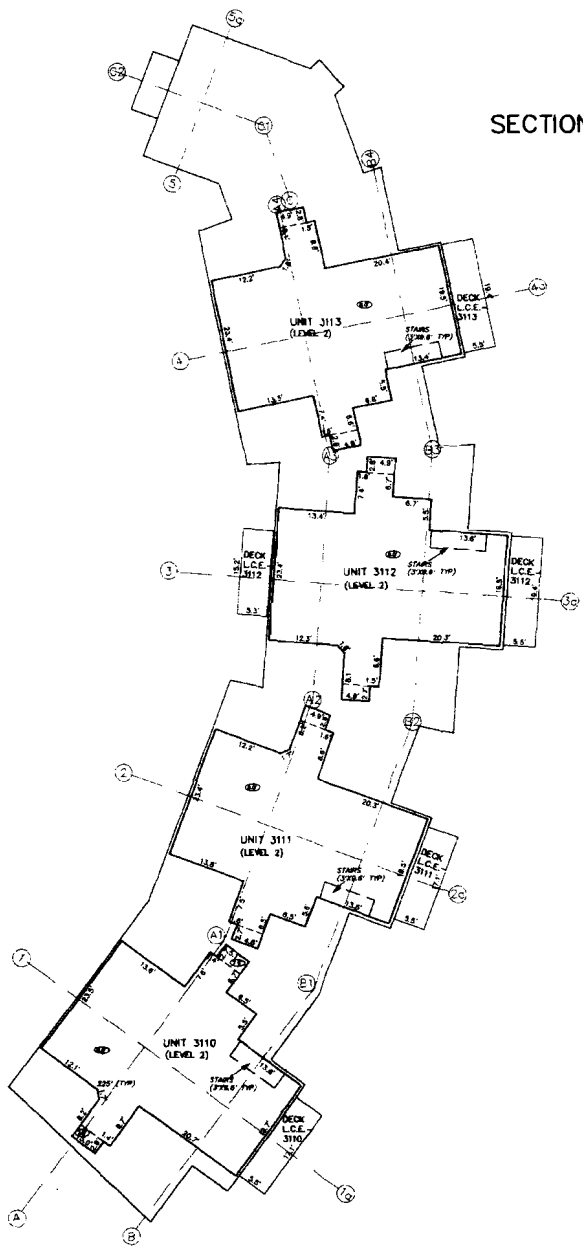
**AEI**  
 ENGINEERING INC.  
 ENGINEERING OFFICE: 222 S. ROCK ST.  
 DENVER, COLORADO 80202  
 • 303 628-3332 • FAX 628-3380

SHEET  
 4 OF 6

JOB# 3025.3

D.59 P.31

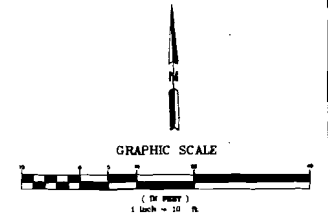
CONDOMINIUM MAP  
**WILLE RESIDENCES**  
 LOT 3, ASPEN HIGHLANDS VILLAGE P.U.D., BLOCK D  
 SECTION 14, TOWNSHIP 10 SOUTH RANGE 85 WEST OF THE SIXTH PRINCIPAL MERIDIAN  
 PITKIN COUNTY, COLORADO



**LEGEND**

- 0.7' — UNIT WALL WITH DIMENSION
- 0.1' — CEILING BREAK WITH DIMENSION
- ⊕ — CEILING HEIGHT
- ⊕ — UNIT SHAPE
- — — — — CROSS SECTION
- G.C.E. — GENERAL COMMON ELEMENT
- L.C.E. — LIMITED COMMON ELEMENT
- ELEVATION 11' — FINISHED FLOOR ELEVATION

**NOTES:**  
 1. ON LEVEL 3 WALL ANGLES ARE 90° OR 720° UNLESS OTHERWISE INDICATED.  
 2. DIM'S WERE MEASURED IN VARIOUS STAGES OF WALL FINISH.



LEVEL 3

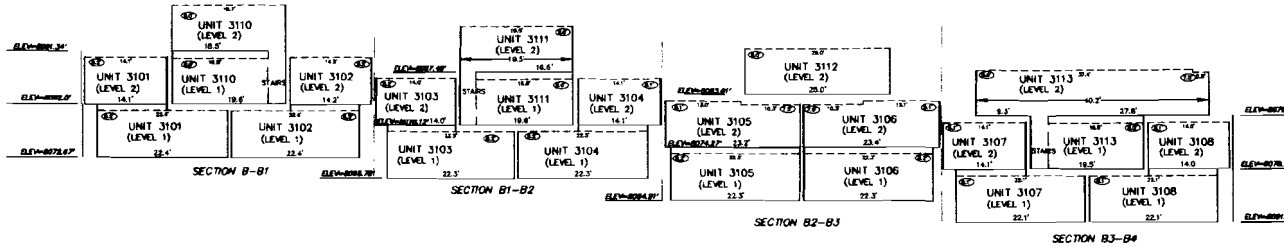
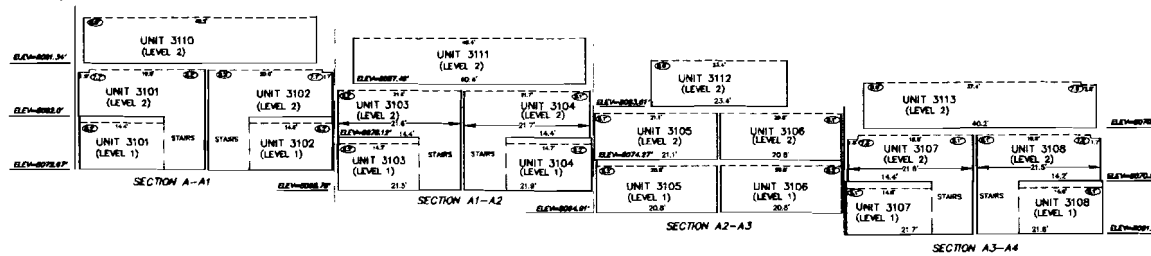


**ALPINE AET**  
 ENGINEERING INC.  
 1000 10th St. Suite 100  
 Aspen, CO 81611  
 Phone: 970.925.1234 Fax: 970.925.1235

SHEET  
 5 OF 6  
 JOB# 3025.3

B.59 P32

CONDOMINIUM MAP  
**WILLE RESIDENCES**  
 LOT 3, ASPEN HIGHLANDS VILLAGE P.U.D., BLOCK D  
 SECTION 14, TOWNSHIP 10 SOUTH RANGE 85 WEST OF THE SIXTH PRINCIPAL MERIDIAN  
 PITKIN COUNTY, COLORADO

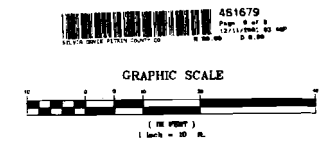


**LEGEND**

- 5/2 — UNIT WALL WITH DIMENSION
- 1/2 — CEILING WITH DIMENSION
- ⊕ — CEILING HEIGHT
- UNIT STAIRS
- CROSS SECTION
- G.C.E. — GENERAL COMMON ELEMENT
- L.C.E. — LIMITED COMMON ELEMENT
- ELEV=808.17 — FINISHED FLOOR ELEVATION

**NOTES**

1. WALL ANGLES ARE 90° OR NOTIFIED UNLESS OTHERWISE INDICATED.
2. UNITS WERE MEASURED IN VARIOUS STAGES OF WALL FINISH.



SECTION A -A1-A2-A3-A4  
 AND SECTION B-B1-B2-B3-B4



**ALPIN  
 AEI**  
 ENGINEERING INC.  
 970 530-5375 • FAX 970-530-1000 •

SHEET  
 6 OF 6  
 JOB# 3025.3