

CONDOMINIUM MAP OF 521-523 W. HOPKINS B87 P99 AFFORDABLE HOUSING CONDOMINIUMS

SURVEYOR'S NOTES:

1. THIS IS A WIDE CONDUIT ELEMENT.
2. THE GENERAL BOUNDARY LINE IS SHOWN BY THE CENTER LINE OF THE CONDUIT.
3. THE CENTER LINE OF THE CONDUIT IS SHOWN BY THE CENTER LINE OF THE CONDUIT.
4. THE CENTER LINE OF THE CONDUIT IS SHOWN BY THE CENTER LINE OF THE CONDUIT.
5. THE CENTER LINE OF THE CONDUIT IS SHOWN BY THE CENTER LINE OF THE CONDUIT.
6. THE CENTER LINE OF THE CONDUIT IS SHOWN BY THE CENTER LINE OF THE CONDUIT.
7. THE CENTER LINE OF THE CONDUIT IS SHOWN BY THE CENTER LINE OF THE CONDUIT.
8. THE CENTER LINE OF THE CONDUIT IS SHOWN BY THE CENTER LINE OF THE CONDUIT.
9. THE CENTER LINE OF THE CONDUIT IS SHOWN BY THE CENTER LINE OF THE CONDUIT.
10. THE CENTER LINE OF THE CONDUIT IS SHOWN BY THE CENTER LINE OF THE CONDUIT.

BEING A CONDOMINIUM COMMON INTEREST COMMUNITY
OF UNIT C AS SHOWN ON THAT CERTAIN PLAT ENTITLED "LOT 2,
BOOMERANG LOT SPLIT PLANNED COMMUNITY PLAT" AS FILED IN PLAT
BOOK 52 AT PAGE 12, PITKIN COUNTY CLERK AND RECORDER'S OFFICE

CONSENT OF MORTGAGE HOLDER:

THE UNDERSIGNED, AS MORTGAGEE UNDER THE PROVISIONS OF THE CERTAIN DEED OF TRUST DATED AND BEING NO. 2007 AND SUCCESSOR IN THE RECORDS OF THE CLERK AND RECORDER OF PITKIN COUNTY AS RECEPTION NO. 2007, HEREBY CONSENTS TO THE RECORDING OF THIS MAP AS HEREON DRAWN AND HEREBY SURRENDERS TO THE EFFECT OF SAID DEED OF TRUST TO THE WATERS SET FORTH ON THIS MAP.

ALIVE BANK BY: *[Signature]*
NAME: *[Name]*

CERTIFICATE OF DEDICATION AND OWNERSHIP:

KNOW ALL MEN BY THESE PRESENTS THAT 521-523 W. HOPKINS AFFORDABLE HOUSING CONDOMINIUMS, BEING A CONDOMINIUM COMMON INTEREST COMMUNITY, WAS PLANNED AND DEVELOPED BY ROBERT C. HUTTON, SURVEYOR, AND IS SHOWN ON THAT CERTAIN PLAT ENTITLED "LOT 2, BOOMERANG LOT SPLIT PLANNED COMMUNITY PLAT" AS FILED IN PLAT BOOK 52 AT PAGE 12, PITKIN COUNTY CLERK AND RECORDER'S OFFICE OF THE PITKIN COUNTY CLERK AND RECORDER'S OFFICE OF THE STATE OF COLORADO.

AS BY THIS CONDOMINIUM MAP OF 521-523 W. HOPKINS AFFORDABLE HOUSING CONDOMINIUMS, SHEETS ONE TO TWO AND ONE AND PLATTED THE SAME ABOVE DESCRIBED LOTS AND UNITS AND 2 1/2 ACRES SHOWN HEREON SUBJECT TO THE CONDOMINIUM DECLARATION FOR 521-523 W. HOPKINS AFFORDABLE HOUSING CONDOMINIUMS RECORDED IN PLAT BOOK 52 AT PAGE 12, PITKIN COUNTY CLERK AND RECORDER'S OFFICE OF THE PITKIN COUNTY CLERK AND RECORDER'S OFFICE OF THE STATE OF COLORADO.

IN WITNESS WHEREOF, I HAVE HEREON SET MY HAND AND SEAL OF OFFICE AT PITKIN, COLORADO, THIS 12TH DAY OF JULY 2008.

[Signature]
NAME: *[Name]*

NOTARY PUBLIC CERTIFICATE:

I, THE UNDERSIGNED, NOTARY PUBLIC, DO HEREBY CERTIFY THAT THE FOREGOING CONSENT OF MORTGAGE HOLDER CERTIFICATE WAS READ AND APPROVED BY THE SAID DAY OF JULY 2008 BY THE UNDERSIGNED AS *[Name]* OF ALPINE BANK.

IN WITNESS MY HAND AND OFFICIAL SEAL, I HAVE HEREON SET MY HAND AND SEAL OF OFFICE AT PITKIN, COLORADO, THIS 12TH DAY OF JULY 2008.

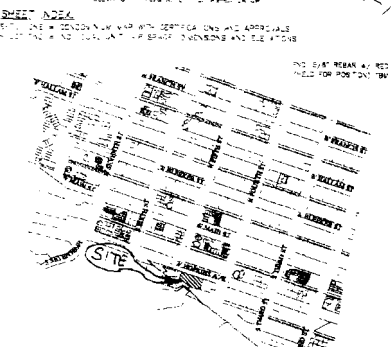
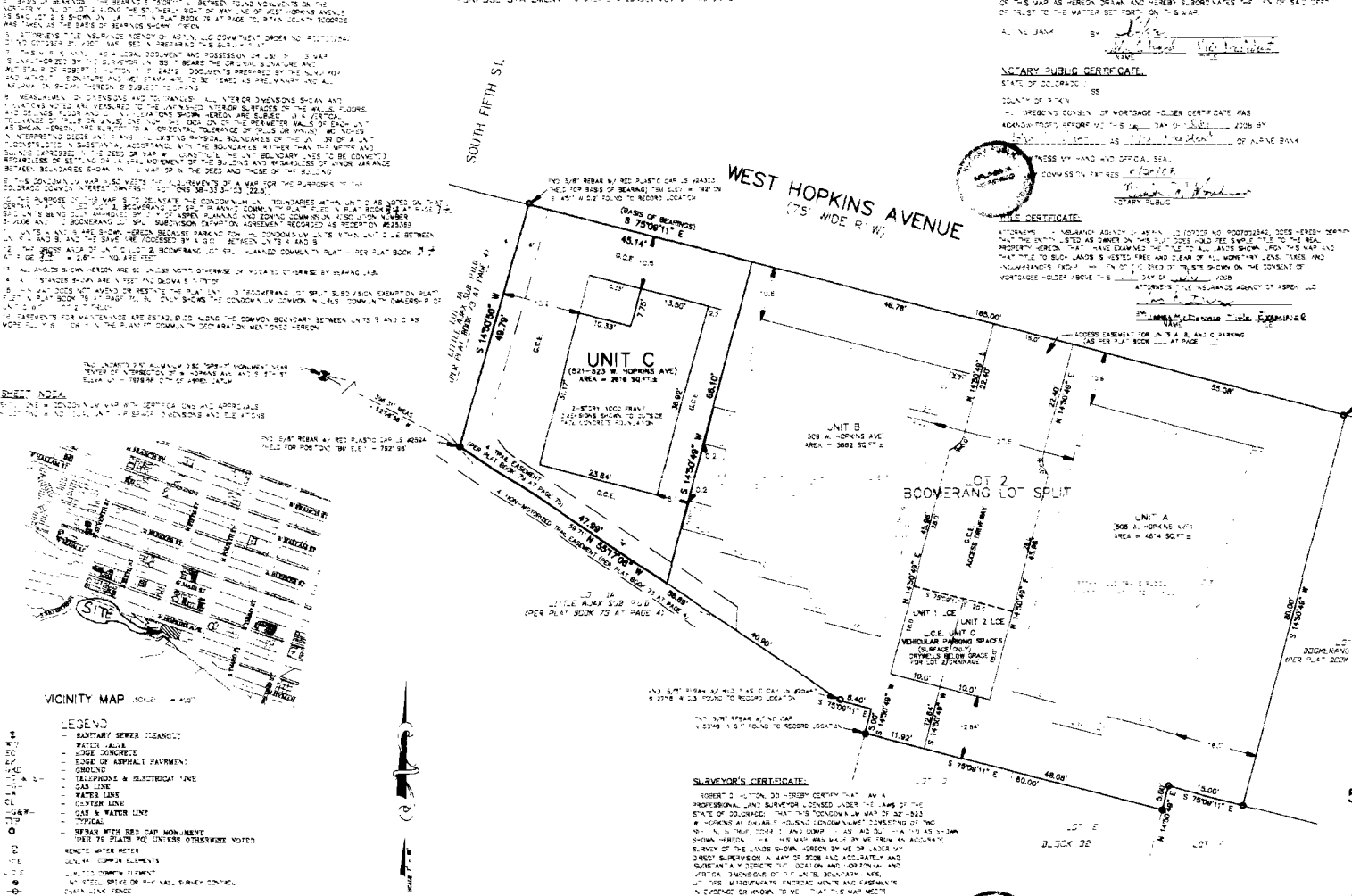
[Signature]
NAME: *[Name]*

NOTARY PUBLIC CERTIFICATE:

I, THE UNDERSIGNED, NOTARY PUBLIC, DO HEREBY CERTIFY THAT THE FOREGOING CERTIFICATE OF DEDICATION AND OWNERSHIP WAS READ AND APPROVED BY THE UNDERSIGNED AS *[Name]* OF ALPINE BANK.

IN WITNESS MY HAND AND OFFICIAL SEAL, I HAVE HEREON SET MY HAND AND SEAL OF OFFICE AT PITKIN, COLORADO, THIS 12TH DAY OF JULY 2008.

[Signature]
NAME: *[Name]*



- LEGEND**
- SANITARY SEWER DRAINAGE
 - WATER MAIN
 - EDGE CONCRETE
 - EDGE OF ASPHALT PAVEMENT
 - GROUND
 - TELEPHONE & ELECTRICITY LINE
 - GAS LINE
 - WATER LINE
 - GAS & WATER LINE
 - TYPICAL
 - METEOR WITH RED CAP NOT MENTIONED
 - TYPICAL
 - METEOR WITH RED CAP NOT MENTIONED
 - TYPICAL
 - METEOR WITH RED CAP NOT MENTIONED
 - TYPICAL
 - METEOR WITH RED CAP NOT MENTIONED
 - TYPICAL
- UTILITY NOTES:**
- The utilities existing on the surface and shown on this drawing have been located by the surveyor. Underground utilities shown on this drawing are the responsibility of the utility companies, and the surveyor does not assume responsibility for their completeness. Indicated locations of utilities are shown on this drawing and are to be confirmed by excavating the utility.
2. The utility service lines and storage facilities are common and serve all units. Access to interior, exterior, and repair and utility services across common elements is provided in the Planned Community Declaration or above mentioned.

SURVEYOR'S CERTIFICATE:

ROBERT C. HUTTON, DO HEREBY CERTIFY THAT I AM A PROFESSIONAL LAND SURVEYOR LICENSED UNDER THE LAWS OF THE STATE OF COLORADO. THAT THIS CONDOMINIUM MAP OF 521-523 W. HOPKINS AFFORDABLE HOUSING CONDOMINIUMS, BEING A CONDOMINIUM COMMON INTEREST COMMUNITY, WAS PLANNED AND DEVELOPED BY ME OR UNDER MY DIRECT SUPERVISION AND I HAVE HEREON SET MY HAND AND SEAL OF OFFICE AT PITKIN, COLORADO, THIS 12TH DAY OF JULY 2008.

DATE: *7/12/08*

[Signature]
NAME: *[Name]*

CITY OF ASPEN ENGINEER'S APPROVAL:

THIS CONDOMINIUM MAP OF 521-523 W. HOPKINS AFFORDABLE HOUSING CONDOMINIUMS WAS REVIEWED AND APPROVED BY THE CITY OF ASPEN ENGINEER ON THIS 12TH DAY OF JULY 2008.

[Signature]
NAME: *[Name]*

COMMUNITY DEVELOPMENT DIRECTOR APPROVAL:

THIS CONDOMINIUM MAP OF 521-523 W. HOPKINS AFFORDABLE HOUSING CONDOMINIUMS WAS REVIEWED AND APPROVED BY THE CITY OF ASPEN COMMUNITY DEVELOPMENT DIRECTOR ON THIS 12TH DAY OF JULY 2008.

[Signature]
NAME: *[Name]*

PITKIN COUNTY CLERK AND RECORDER'S CERTIFICATE:

THIS CONDOMINIUM MAP OF 521-523 W. HOPKINS AFFORDABLE HOUSING CONDOMINIUMS, BEING A CONDOMINIUM COMMON INTEREST COMMUNITY, WAS PLANNED AND DEVELOPED BY ROBERT C. HUTTON, SURVEYOR, AND IS SHOWN ON THAT CERTAIN PLAT ENTITLED "LOT 2, BOOMERANG LOT SPLIT PLANNED COMMUNITY PLAT" AS FILED IN PLAT BOOK 52 AT PAGE 12, PITKIN COUNTY CLERK AND RECORDER'S OFFICE OF THE PITKIN COUNTY CLERK AND RECORDER'S OFFICE OF THE STATE OF COLORADO.

RECEIVED: 65124 07 21 2008
08 29 AM - 02:19 65100 HUTTON
MORNING, PITKIN COUNTY, CO
PLAT BK 52 PG 12

CONDOMINIUM MAP OF 521-523 W. HOPKINS AFFORDABLE HOUSING CONDOMINIUMS

BEING A CONDOMINIUM COMMON INTEREST COMMUNITY OF UNIT C AS SHOWN ON THAT CERTAIN PLAT ENTITLED "LOT 2, BOOMERANG LOT SPLIT PLANNED COMMUNITY PLAT" AS FILED IN PLAT BOOK 52 AT PAGE 12, PITKIN COUNTY CLERK AND RECORDER'S OFFICE (521-523 W. HOPKINS AVENUE)

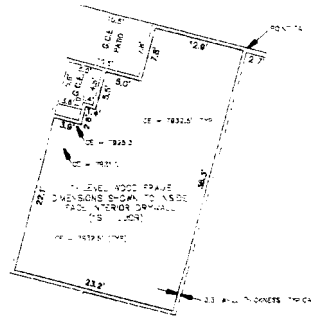
CITY OF ASPEN PITKIN COUNTY COLORADO
SCALE: 1" = 10' DATE: JULY 2008

ROBERT C. HUTTON
PROFESSIONAL LAND SURVEYOR
125 CEMETERY AVE.
ASPEN, COLORADO 81611
(970) 944-9952

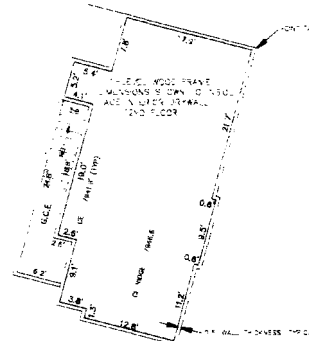
SHEET ONE OF TWO

CONDOMINIUM MAP OF 521-523 W. HOPKINS **B87 P99** AFFORDABLE HOUSING CONDOMINIUMS

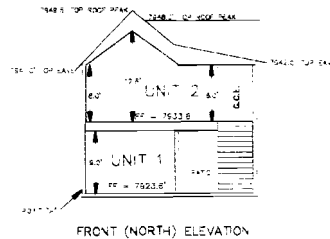
BEING A CONDOMINIUM COMMON INTEREST COMMUNITY
OF UNIT C AS SHOWN ON THAT CERTAIN PLAT ENTITLED "LOT 2,
BOOMERANG LOT SPLIT PLANNED COMMUNITY PLAT" AS FILED IN PLAT
BOOK 117 AT PAGE 11, PITKIN COUNTY CLERK AND RECORDER'S OFFICE



UNIT 1
521 W HOPKINS AVE
AREA = 752 SQ.FT.



UNIT 2
523 W HOPKINS AVE
AREA = 800 SQ.FT.



FRONT (NORTH) ELEVATION

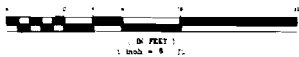
NOTES:

1. BREAKING WALLS (IF ANY) WITHIN THE UNITS SHOWN HEREON ARE CONSIDERED GENERAL COMMON ELEMENTS

LEGEND

- FF - FINISHED FLOOR ELEVATION
- CE - CEILING ELEVATION
- G.C.I. - GENERAL COMMON ELEMENTS
- TR - TYPICAL

GRAPHIC SCALE



CONDOMINIUM MAP OF 521-523 W. HOPKINS AFFORDABLE HOUSING CONDOMINIUMS

BEING A CONDOMINIUM COMMON INTEREST COMMUNITY
OF UNIT C AS SHOWN ON THAT CERTAIN PLAT ENTITLED "LOT 2,
BOOMERANG LOT SPLIT PLANNED COMMUNITY PLAT" AS FILED IN PLAT
BOOK 117 AT PAGE 11, PITKIN COUNTY CLERK AND RECORDER'S OFFICE
(521-523 W. HOPKINS AVENUE)

CITY OF ASPEN PITKIN COUNTY COLORADO
SCALE: 1" = 8' DATE: JULY, 2008

ROBERT C. HUTTON
PROFESSIONAL LAND SURVEYOR
728 CEMETERY LANE
ASPEN, COLORADO 81611
(970) 924-8852

SHEET TWO OF TWO

JOB# 178-07